



Michigan Department of Labor & Economic Growth

Michigan's Labor Market News

Vol. 63, Issue No. 6

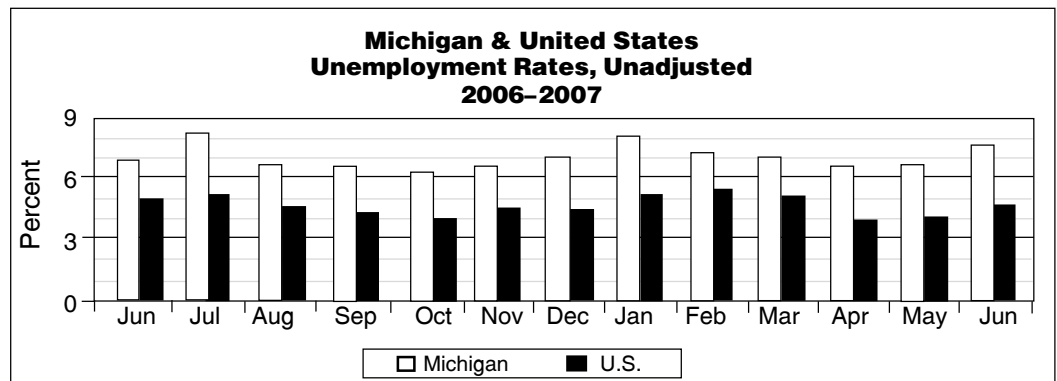
August 2007

Michigan's June Unemployment Rate Increases Seasonally

Michigan's unemployment rate (not seasonally adjusted) moved up by eight tenths of a percentage point during the month of June, bringing the state's rate up to 7.4 percent. The increase in the jobless rate represents 46,000 additional individuals out of work, as unemployment expanded to 378,000. The state's civilian labor force advanced by 64,000 to 5,113,000, while employment climbed by 18,000 to 4,735,000. The increase in the jobless rate can be partially traced to the very competitive nature of Michigan's current labor market. Typically, many college and high school students as well as seasonal workers enter the labor market in June seeking summer employment.

The number of workers entering the market outpaced the number of available positions in seasonal industries such as construction, leisure and hospitality services, and retail trade, causing June's jobless rate to increase. The nation's unemployment rate (unadjusted) also moved up in June, increasing by 0.4 of a percentage point to 4.7 percent.

Compared to a year ago, June's labor force declined by 17,000, employment decreased by 43,000 and unemployment moved up by 26,000. This has resulted in an over-the-year increase of 0.5 percent in the state's jobless rate.



Nonfarm Employment Remains Flat During June

Michigan's nonfarm employment edged up only slightly during the month of June, as industry jobs totaled 4,342,000. Employment opportunities moved up by 2,000, with gains recorded in the goods-producing sector of the economy. Good-producing jobs expanded by 8,000 during the month, mostly due to seasonal gains in the construction industry, up by 5,000 (specialty trade contractors, and construction of buildings). Manufacturing employment remained basically flat, showing minor upward adjustments mainly in the durable goods sector. Service-providing jobs dipped by 7,000 during the month of June. Although seasonal increases were recorded in the leisure and hospitality sector, up by 11,000 (arts, entertainment, amusement and gambling, and accommodation and food services), along with gains in professional and business services (up by 8,000), and financial activities (up by 2,000), it was not enough to offset seasonal losses in government (down by 28,000), as state and local educational facilities released staff for summer vacation.

In June, average weekly hours in Michigan's manufacturing industries contracted to 42.6, from 42.9 hours in the previous month, while average hourly earnings increased by 4 cents to \$22.03. As a result, average weekly earnings in manufacturing moved down to \$938.48, a drop of \$4.89 from the previous month's total.

	Average Hourly Earnings		Average Weekly Hours	
	2007 June	2007 May	2007 June	2007 May
Manufacturing	\$22.03	\$21.99	42.6	42.9
Durables	23.85	23.78	43.9	44.3
Transport Equipment	28.53	28.23	42.9	43.7
Nondurables	15.34	15.30	38.5	38.3

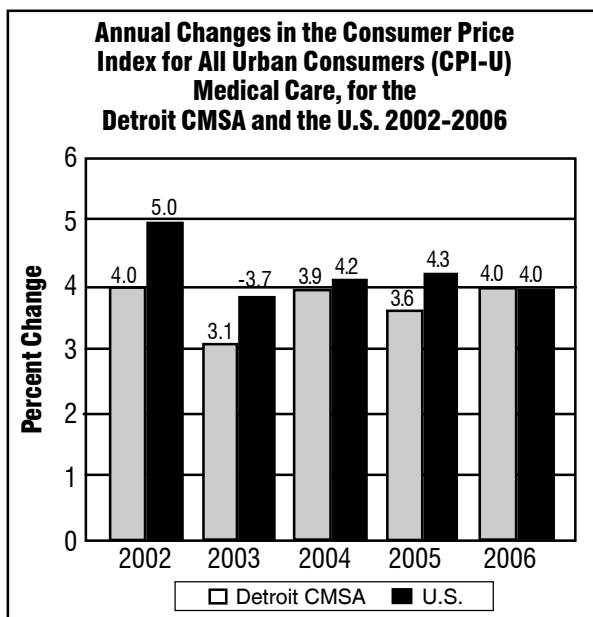
Michigan's Medical Care Price Index Moves Up During 2006

Medical care is one of the major item groups within the Consumer Price Index (CPI). This group consists of medical care commodities and medical care services. Medical care services is organized into three expenditure categories, professional services, hospital and related services and health insurance. Medical care commodities comprise of prescription drugs and medical supplies, and nonprescription drugs and medical supplies.

The CPI measures inflation at the retail level, and reflects the average price change over time for a constant quality and constant quantity market basket of goods and services. In most cases it approximates what households spend out-of-pocket on goods and services used for day-to-day living. Therefore, medical care indexes are limited to items with an out-of-pocket expenditure, although in the case of medical care the term out-of-pocket includes any health insurance premium amounts that are deducted from employee paychecks.

The rate of *medical care inflation* in the Detroit CMSA (Consolidated Metropolitan Statistical Area, including the Detroit-Warren-Livonia, Ann Arbor and Flint MSAs) stood at 4.0 percent during 2006, a gain of 0.4 percent from the previous year's increase of 3.6 percent. This was the first year since 2001 that Michigan's rate of health care price inflation was not below the national rate. In 2006, the rate of gain in the nation's medical care prices eased slightly over the year, decreasing from 4.3 to 4.0 percent. Nationally, most detailed medical categories recorded similar growth rates in prices in 2005 and 2006.

Source: U.S. Department of Labor, Bureau of Labor Statistics, March 2007.



Michigan

(Data In Thousands)

Jun 2007 May 2007 Jun 2006

Place of Residence

Labor Force	5,113	5,049	5,130
Employment	4,735	4,717	4,778
Unemployment Rate (Percent)	378	332	352
	7.4	6.6	6.9

Industry Jobs (Place of Work)

Total Nonfarm	4,342	4,340	4,401
Goods-Producing	815	807	863
Nat Resources & Mining	8	8	9
Construction	176	171	193
Manufacturing	631	628	662
Durable Goods	486	484	514
Fabricated Metals	84	83	84
Machinery Manufact.	73	72	75
Transportation Equip.	202	203	227
Nondurable Goods	145	144	148
Service-Providing	3,527	3,534	3,538
Trade, Transport & Util.	790	786	804
Wholesale Trade	173	172	174
Retail Trade	489	488	499
Motor Vehicle Dealers	57	57	60
Food & Beverage Stores	82	81	84
General Merchandise	107	108	109
Transp, Warehousing & Util	128	126	131
Information	67	67	67
Financial Activities	216	214	220
Finance & Insurance	161	161	163
Real Estate & Rental	55	53	57
Prof & Business Services	595	587	595
Prof, Scientific & Technical	244	243	245
Management Scientific Services	20	20	20
Administrative Support	288	282	287
Education & Health Services	590	596	581
Education Services	73	81	71
Health Care & Social Asst	517	515	510
Leisure & Hospitality	435	424	433
Arts, Entertainment & Rec	72	68	73
Accommodation & Food	362	356	360
Other Services	181	179	181
Government	654	682	658
Federal	54	53	55
State	160	165	158
Local	441	463	445

Civilian Labor Force and Wage & Salary Estimates

	Ann Arbor			Battle Creek			Bay City		
	Jun 2007	May 2007	Jun 2006	Jun 2007	May 2007	Jun 2006	Jun 2007	May 2007	Jun 2006
Place of Residence									
Labor Force	188,900	188,000	191,800	71,900	71,700	73,000	54,900	55,200	56,600
Employment	179,100	179,500	182,300	66,700	67,000	67,900	51,100	51,700	52,700
Unemployment Rate (Percent)	9,800 5.2	8,500 4.5	9,500 4.9	5,200 7.2	4,700 6.5	5,100 6.9	3,800 7.0	3,600 6.5	3,900 6.9
Place of Work									
Total Nonfarm Jobs	200,200	200,700	201,500	61,500	61,600	61,900	38,400	38,400	39,200
Nat Resources & Construction	5,900	5,800	6,200	2,300	2,200	2,400	1,500	1,400	1,600
Manufacturing	18,600	18,600	20,500	13,600	13,500	13,800	3,900	3,900	4,300
Trade, Transport & Utilities	27,800	27,600	27,900	10,000	9,900	10,100	8,700	8,600	8,900
Wholesale Trade	5,900	5,800	5,900	*	*	*	*	*	*
Retail Trade	17,900	17,900	18,100	6,800	6,800	6,900	6,100	6,100	6,200
Information	3,700	3,700	3,800	*	*	*	700	700	700
Financial Activities	6,200	6,100	6,100	1,600	1,600	1,600	1,700	1,600	1,600
Professional & Business Services	27,900	27,700	28,000	5,000	4,900	5,100	3,600	3,600	3,600
Educational & Health Services	23,900	24,000	23,400	9,700	9,800	9,400	5,800	5,700	5,800
Leisure & Hospitality	15,100	14,900	15,100	6,100	6,000	6,200	4,700	4,700	4,600
Other Services	6,700	6,600	6,600	2,400	2,400	2,400	2,100	2,100	2,100
Government	64,400	65,700	63,900	10,100	10,500	10,200	5,700	6,100	6,000
	Detroit-Warren-Livonia (Data in Thousands)			Flint			Grand Rapids-Wyoming		
	Jun 2007	May 2007	Jun 2006	Jun 2007	May 2007	Jun 2006	Jun 2007	May 2007	Jun 2006
Place of Residence									
Labor Force	2,204	2,157	2,182	209,300	208,000	215,500	414,700	414,200	417,500
Employment	2,027	2,009	2,024	191,900	191,700	198,200	388,500	390,800	392,600
Unemployment Rate (Percent)	178 8.1	148 6.9	158 7.2	17,300 8.3	16,300 7.8	17,400 8.1	26,100 6.3	23,400 5.6	25,000 6.0
Place of Work									
Total Nonfarm Jobs	2,012	2,005	2,043	151,400	151,700	155,300	398,400	399,800	396,900
Nat Resources & Construction	74	71	83	6,600	6,100	6,600	19,100	18,500	19,400
Manufacturing	267	266	277	17,200	16,800	20,400	73,100	72,700	73,900
Trade, Transport & Utilities	365	364	375	31,800	31,700	31,800	75,200	75,100	74,600
Wholesale Trade	90	90	93	6,500	6,500	6,600	22,500	22,400	22,500
Retail Trade	213	212	217	21,100	21,100	21,100	42,200	42,300	41,600
Information	34	34	35	2,600	2,600	2,600	5,700	5,700	5,700
Financial Activities	114	113	117	7,100	7,200	7,500	22,900	22,900	22,600
Professional & Business Services	365	361	366	14,500	14,200	14,500	57,800	56,900	57,700
Educational & Health Services	279	279	273	24,700	24,400	24,200	57,300	58,700	55,100
Leisure & Hospitality	192	191	192	16,600	16,500	16,900	33,900	33,800	33,600
Other Services	92	91	91	6,400	6,300	6,600	16,800	16,600	17,000
Government	231	235	235	23,900	25,900	24,200	36,600	38,900	37,300

* Data Not Available

Civilian Labor Force and Wage & Salary Estimates

	Holland-Grand Haven			Jackson			Kalamazoo-Portage		
	Jun 2007	May 2007	Jun 2006	Jun 2007	May 2007	Jun 2006	Jun 2007	May 2007	Jun 2006
Place of Residence									
Labor Force	139,200	138,800	141,100	78,300	78,100	79,300	175,500	174,900	176,700
Employment	131,000	131,700	133,500	72,000	72,500	73,700	165,000	165,700	166,500
Unemployment	8,100	7,000	7,600	6,300	5,600	5,700	10,500	9,200	10,200
Rate (Percent)	5.9	5.1	5.4	8.0	7.2	7.1	6.0	5.3	5.8
Place of Work									
Total Nonfarm Jobs	117,100	117,800	118,100	59,600	59,900	60,300	146,400	147,100	146,000
Nat Resources & Construction	6,400	6,200	6,500	2,200	2,100	2,400	6,400	6,200	6,700
Manufacturing	37,100	36,900	37,500	9,300	9,400	9,800	23,100	22,900	23,800
Trade, Transport & Utilities	18,300	18,200	18,500	12,600	12,500	12,800	24,600	24,600	24,800
Wholesale Trade	*	*	*	*	*	*	4,700	4,700	4,600
Retail Trade	10,400	10,300	10,700	7,800	7,800	7,900	16,000	16,000	16,300
Information	700	700	900	500	500	500	1,500	1,500	1,500
Financial Activities	3,300	3,200	3,300	1,900	1,900	1,900	7,800	7,800	7,900
Professional & Business Services	11,900	11,700	11,900	4,500	4,400	4,500	16,600	16,700	15,300
Educational & Health Services	10,200	10,600	10,200	9,800	9,900	9,600	22,200	22,200	21,400
Leisure & Hospitality	8,800	8,500	9,000	6,000	5,900	6,100	16,200	16,000	16,000
Other Services	4,900	4,900	4,900	2,900	2,900	2,900	6,600	6,600	6,600
Government	15,500	16,900	15,400	9,900	10,400	9,800	21,400	22,600	22,000
Place of Residence									
Labor Force	248,500	247,800	251,200	78,800	78,100	80,000	91,800	90,900	93,100
Employment	233,100	234,300	235,800	73,700	73,700	75,000	84,800	84,600	86,700
Unemployment	15,400	13,400	15,400	5,100	4,400	5,100	7,000	6,200	6,400
Rate (Percent)	6.2	5.4	6.1	6.5	5.6	6.3	7.6	6.9	6.9
Place of Work									
Total Nonfarm Jobs	225,800	227,000	226,000	44,700	44,600	45,000	66,900	67,000	68,100
Nat Resources & Construction	8,700	8,300	9,000	3,100	3,100	2,700	2,400	2,400	2,400
Manufacturing	21,000	21,000	22,300	7,300	7,200	8,100	13,000	12,800	13,300
Trade, Transport & Utilities	36,600	36,400	36,400	9,600	9,500	9,800	14,300	14,200	14,700
Wholesale Trade	5,700	5,600	5,700	1,000	1,000	1,100	*	*	*
Retail Trade	24,400	24,400	24,200	5,400	5,400	5,600	11,600	11,400	11,900
Information	3,000	3,000	3,000	*	*	*	1,000	1,000	1,000
Financial Activities	15,600	15,500	15,400	1,700	1,700	1,700	1,900	1,900	2,000
Professional & Business Services	20,500	20,300	20,900	3,600	3,600	3,600	4,000	3,900	4,000
Educational & Health Services	28,500	28,800	28,000	4,900	4,900	4,800	11,300	11,400	10,700
Leisure & Hospitality	19,900	19,900	19,700	5,700	5,600	5,500	8,100	7,500	8,400
Other Services	11,200	11,100	11,300	2,000	2,000	2,000	2,500	2,500	2,600
Government	60,800	62,700	60,000	6,400	6,700	6,600	8,400	9,400	9,000

* Data Not Available

Civilian Labor Force and Wage & Salary Estimates

Niles-Benton Harbor

Saginaw-Sag. Township North

	Jun 2007	May 2007	Jun 2006	Jun 2007	May 2007	Jun 2006
Place of Residence						
Labor Force	79,300	78,400	80,900	97,500	97,900	100,500
Employment	73,700	73,300	75,100	90,300	91,300	92,800
Unemployment	5,600	5,000	5,800	7,100	6,600	7,700
Rate (Percent)	7.1	6.4	7.2	7.3	6.7	7.7

Place of Work

Total Nonfarm Jobs	64,600	64,200	65,100	91,100	91,600	92,600
Nat Resources & Construction	2,600	2,500	2,600	3,900	3,700	4,000
Manufacturing	14,500	14,400	14,900	12,400	12,200	13,500
Trade, Transport & Utilities	11,700	11,600	12,000	17,500	17,500	17,400
Wholesale Trade	*	*	*	2,600	2,600	2,600
Retail Trade	7,300	7,200	7,500	12,200	12,200	12,100
Information	900	900	900	1,700	1,700	1,900
Financial Activities	2,300	2,200	2,300	4,200	4,300	4,500
Professional & Business Services	5,000	4,900	5,100	10,500	10,400	10,300
Educational & Health Services	9,800	9,900	9,400	15,600	15,500	15,400
Leisure & Hospitality	6,900	6,600	6,900	9,800	9,800	9,800
Other Services	3,100	3,100	3,100	3,900	3,900	4,000
Government	7,800	8,100	7,900	11,600	12,600	11,800

*Data Not Available

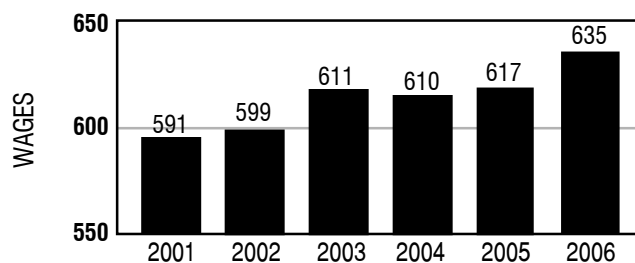
Upper Peninsula

Northeast Michigan

Northwest Michigan

	Jun 2007	May 2007	Jun 2006	Jun 2007	May 2007	Jun 2006	Jun 2007	May 2007	Jun 2006
Place of Residence									
Labor Force	164,100	161,600	164,600	102,900	100,800	103,500	167,100	161,700	168,100
Employment	152,400	150,000	153,800	94,200	92,300	95,600	155,700	150,400	157,700
Unemployment	11,700	11,600	10,800	8,600	8,500	7,900	11,400	11,300	10,400
Rate (Percent)	7.1	7.2	6.6	8.4	8.4	7.6	6.8	7.0	6.2

AVERAGE WEEKLY WAGES MUSKEGON-NORTON SHORES MSA ANNUAL AVERAGES 2001-2006



Regional Focus

Average Weekly Wages in the Muskegon-Norton Shores MSA, Annual Averages 2001-2006

Average weekly wages (AWW) in the Muskegon MSA moved up to \$635 during 2006, an annual gain of \$18 or 2.9 percent over the previous year. In 2005 the area's AWW stood at \$617, an increase of \$7 or 1.1 percent from 2004. Average weekly wages are calculated by dividing the total wages paid that period in the area by the average number of workers and by the number of weeks (52). The weekly wages contain all the area's earnings, including overtime wages.

June Unemployment Rates Moved Up In Most of Michigan's Major Regional Labor Market Areas

June seasonally unadjusted unemployment rates increased in 14 of Michigan's 17 regional major labor market areas. The rate increases ranged from 0.5 to 1.2 percentage points, with a median gain of 0.7 of a percentage point. The upward movements of the jobless rates in June were centered in the state's Metropolitan Statistical Areas (MSA's), with the largest over-the-month advances recorded in the Detroit-Warren-Livonia and Monroe MSAs. Jobless rates declined slightly over the month in the Northwest Lower Michigan Region and the Upper Peninsula, while the rate in the Northeast Lower Michigan Region remained unchanged. From May to June, total employment levels edged downward in nine regions, with losses averaging one half of a percent. Seven areas reported employment gains, with the largest advances occurring in the state's three northernmost labor market areas. Total employment in the Monroe MSA was unchanged over the month.

From June 2006 to June 2007, jobless rates moved upward in 15 of the state's major labor market areas. Eight regions recorded only small gains of 0.3 percent or less, while the remaining areas reported increases of half of a percentage point or more. The largest jobless rate increases since June 2006 were recorded in the Detroit and Jackson MSAs, moving up by nearly one full percentage point each. The two areas to show jobless rate reductions over the period were the Niles-Benton Harbor and Saginaw-Saginaw Township North MSAs.

Among Michigan's major labor markets, the Ann Arbor area had the lowest unemployment rate at 5.2 percent, followed by the Holland-Grand Haven MSA with 5.9 percent, and the Kalamazoo-Portage MSA with 6.0 percent. The highest jobless rate in the month of June was recorded by the Northeast Lower Michigan Region at 8.4 percent, followed closely by the Flint MSA with 8.3 percent.

Most Michigan Metropolitan Areas Show Seasonal Declines in Nonfarm Employment

Total nonfarm jobs decreased seasonally in 10 of Michigan's 14 MSAs during the month of June. Payroll jobs in three areas, the Detroit-Warren-Livonia, Monroe, and Niles-Benton Harbor MSAs moved up slightly, and one area, the Bay City MSA was unchanged. Employment declines were moderate, and in most regions were reported in the service-providing sectors of the economy. Among the MSAs, the Holland, Jackson, and Niles-Benton Harbor MSAs had the largest job decreases at 0.6 percent, followed by the Kalamazoo, Lansing, and Saginaw MSAs with a drop of 0.5 percent.

Employment totals in the service-providing industries were mixed in most major areas. Job gains were recorded in professional and business services, moving up in 11 areas (the Detroit MSA recording the highest gains, 4,000 jobs or 1.1 percent); leisure and hospitality services advanced in 11 areas (the Muskegon MSA leading the way with 600 jobs, or 8.0 percent); and financial activities with minor gains in six areas. Employment increases in these industries were seasonal, and typical for June. Countering these gains were seasonal reductions in state and local government, as many educational facilities reduced staff for the summer.

In the goods-producing sector, employment advanced in most areas due to seasonal increases in the construction

industry, primarily in specialty trade contractors and construction of buildings. The largest percentage gains in construction were recorded in the Flint MSA, up by 8.2 percent (500 jobs), and the Saginaw MSA up by 5.4 percent. The manufacturing sector held its own during June, advancing in 10 areas, dropping in one (Jackson MSA), and holding steady in three (Ann Arbor, Bay City, and Lansing MSAs). Among the areas showing advances in this sector, the Flint MSA had the strongest gains, moving up by 2.4 percent. The Muskegon and Saginaw MSAs followed, both rising by 1.6 percent.

During June, average weekly hours in manufacturing moved up in two of the five major areas for which data is currently available. Two areas reported contractions, and one area (Kalamazoo MSA) remained unchanged. Average hourly earnings expanded in three areas during the month, with advances reported mainly in the durable goods industries. The total effect of these changes was that average weekly earnings increased in three of the major areas. Weekly earnings gains were reported in the Flint MSA, up by \$80.79, followed by the Lansing and Grand Rapids MSAs, up by \$5.34 and \$3.74, respectively. The areas to show slight reductions for the month were the Detroit MSA down by \$11.38, and the Kalamazoo MSA down by \$1.20.

Manufacturing Hours and Earnings* Michigan and Selected Metropolitan Areas June and May 2007

Area	Average Weekly Hours		Average Hourly Earnings		Average Weekly Earnings	
	June	May	June	May	June	May
Michigan	42.6	42.9	22.03	21.99	\$938.48	\$943.37
Detroit-Warren-Livonia	43.8	44.3	24.53	24.51	1,074.41	1,085.79
Flint	45.6	45.2	31.33	29.82	1,428.65	1,347.86
Grand Rapids-Wyoming	41.6	41.3	17.96	18.00	747.14	743.40
Kalamazoo-Portage	39.9	39.9	14.76	14.79	588.92	590.12
Lansing-East Lansing	40.9	41.0	24.52	24.33	1,002.87	997.53

* Hours and earnings data for the manufacturing sector is currently available only in the above MSAs.

Consumer Price Index (CPI) Detroit Metropolitan Area JUNE 2007

The Consumer Price Index (CPI) is a measure of the average change in prices over time in a fixed market basket of goods and services. The Bureau of Labor Statistics (BLS) publishes CPI's for two population groups: 1) a CPI for All Urban Consumers (CPI-U) which covers approximately 87 percent of the total population, and 2) a CPI for Urban Wage Earners and Clerical Workers (CPI-W) which covers 32 percent of the total population. The CPI-U includes, in addition to wage earners and clerical workers, groups such as professional, managerial and technical workers, the unemployed, retirees and others not in the labor force.

The CPI is based on prices of food, clothing, shelter and fuels, transportation fares, charges for doctors' and dentists' services, drugs, and other goods and services that people buy for day-to-day living. Prices are collected in 87 urban areas across the country, including the Detroit-Ann Arbor-Flint Consolidated Metropolitan Statistical Area (CMSA). The Detroit CPI is published every other month.

Consumer prices (CPI-U) in the Detroit CMSA, moved up from an average of 200.4 index points in April 2007 to an average of 201.6 points in June 2007. The 0.6 percent increase was primarily due to higher costs for motor fuel. Prices for recreation and apparel fell by 5.1 and 2.0 percent, respectively, while prices for energy in general exhibited a strong increase, moving up by 9.0 percent over the period.

Consumer Price Index (CPI) All Urban Consumers (CPI-U) Detroit Metropolitan Area June 2007

	Index Number for June 2007	Percent Change from April 2007 to June 2007
Detroit Metro All Items	201.6	+0.6
Food and Beverages	190.1	+1.0
Food at Home	187.8	+1.5
Food away from Home	193.1	+0.5
Housing	190.9	-0.2
Shelter	215.8	-0.5
Fuels & Utilities	216.8	+2.4
Apparel	108.1	-2.0
Transportation	210.4	+4.4
Motor Fuel	275.9	+14.5
Medical Care	352.9	0.0
Education & Communicat.	126.7	-0.1
Energy	227.4	+9.0
Recreation	115.4	-5.1

Wage and Salary Employment In Michigan Mid-year Report, 2007

Michigan's labor market during the first six months of 2007 experienced job contractions in most industries, with the state's manufacturing sector showing strong losses, as the automotive industry continued its restructuring process. The service industries revealed a mixed picture, experiencing moderate decline in some sectors, and small growth in others. The result of these developments was that the total number of payroll jobs in Michigan during this period fell by 52,000, or 1.2 percent from the same period in 2006.

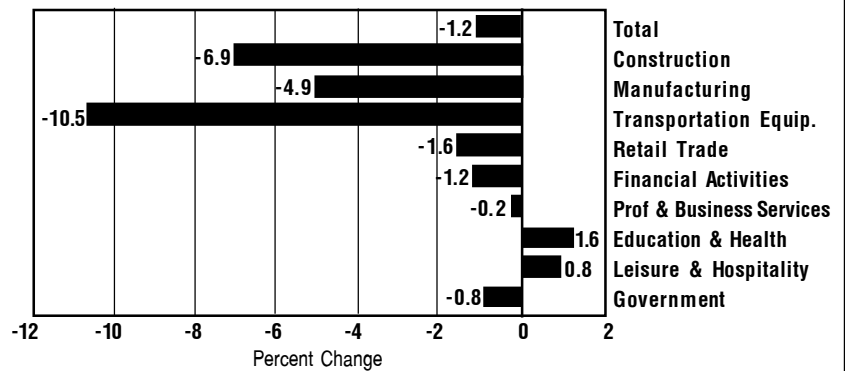
During the first six months of 2007, jobs in Michigan's service-providing industries stood at 3,485,000, a decrease of close to 8,000 jobs, or 0.2 percent from the same period in 2006. Retail trade, one of the industries in the private service sector to record job loss, fell by close to 8,000 jobs or 1.6 percent, followed by financial activities down by 1.2 percent and professional and business services, down by 0.2 percent. These reductions were countered by gains in education and health services, and leisure and hospitality services, up by 9,000 jobs (1.6 percent) and 3,000 jobs (0.8 percent), respectively. Both sectors displayed noticeable improvement for the third consecutive year.

Among the goods-producing industries, the construction industry lost close to 12,000 jobs or 6.9 percent, while manufacturing decreased by 32,000 or 4.9 percent. Most of the employment losses in manufacturing came from the durable goods sector, as transportation equipment (down by 24,000, or 10.5 percent) and its related industries registered most of the downward adjustments.

Government employment contracted by 5,000 jobs or 0.8 percent over the period, much of it in local education.

Source: DLEG; Bureau of Labor Market Information & Strategic Initiatives, July 2007.

**Percent Changes in Major Industries in Michigan, 2006-2007
Mid-year Report (January through June)**



Visit our website at www.michigan.gov/lmi



FIRST CLASS MAIL
POSTAGE & FEES PAID
U.S. DEPARTMENT OF LABOR
PERMIT NO. 167

Michigan Department of Labor & Economic Growth
Bureau of Labor Market Information & Strategic Initiatives
Cadillac Place
3032 W. Grand Boulevard, Suite 9-100
Detroit, Michigan 48202

Official Business
Penalty For Private Use \$300

ADDRESS CHANGE:

Remove From Mailing List Change As Shown
Please send this form and attached label to DLEG; Labor Market Analysis Section
Bureau of Labor Market Information & Strategic Initiatives;
Cadillac Place, 3032 W. Grand Boulevard, Suite 9-100; Detroit, Michigan 48202.
For more information, please contact: Labor Market Analysis Section, (313) 456-3090