



Michigan Department of Labor & Economic Growth

# Michigan's Labor Market News

Vol. 63, Issue No. 10

December 2007

## Michigan's October Jobless Rate Remains Unchanged At 7.0 Percent

Michigan's unemployment rate (not seasonally adjusted) remained unchanged during the month of October, holding steady at 7.0 percent. Although the jobless rate did not change, labor force, employment and unemployment levels all edged down during the month. The state's civilian labor force contracted by 29,000 to 5,012,000, employment moved down by 24,000 to 4,662,000, and unemployment edged down by 4,000 to 351,000. The decrease in Michigan's labor force and employment totals was primarily caused by temporary layoffs in the goods-producing sector. In addition to minor seasonal reductions in construction (down by 3,000), there were short term layoffs in the automotive industry (-7,000),

as well as some minor cuts in other industry sectors. On the other hand, some of these job losses were countered by seasonal gains in the service-providing sector, as various colleges and universities recalled their support personnel for the fall semester. The nation's unemployment rate (unadjusted) moved down in October, dropping by 0.1 of a percentage point to 4.4 percent.

Compared to a year ago, October's labor force declined by 78,000, employment decreased by 113,000 and unemployment moved up by 36,000. This has resulted in an over-the-year increase of 0.8 percent in the state's jobless rate.



## Michigan's Nonfarm Jobs Show Minor Seasonal Gains

Michigan's nonfarm employment was stable during the month of October, as industry jobs totaled 4,306,000. Employment opportunities moved up by 1,000, with gains recorded in the service-providing sector of the economy. Payroll job advances were concentrated mainly in government, up by 22,000, as state and local educational facilities recalled their nonfaculty staff for the fall semester. Seasonal advances were also reported in private educational services (up by 5,000). Another sector to report small seasonal gains for the month was retail trade (general merchandise stores), up by 3,000 jobs. Leisure and hospitality was the sector to show seasonal employment reductions for the month, down by 14,000, while financial activities and professional and business services remained basically flat. Good-producing employment contracted by 11,000 jobs during October, mainly due to production adjustments in the automotive industry and its suppliers. Construction employment reported a small seasonal drop, mainly in specialty trade contractors.

In October, average weekly hours in Michigan's manufacturing industries contracted to 43.3, from 43.4 hours in the previous month, while average hourly earnings fell by 11 cents to \$21.97. As a result, average weekly earnings in manufacturing moved down to \$951.30, a drop of \$6.97 from the previous month's total.

	Average Hourly Earnings		Average Weekly Hours	
	2007 Oct	2007 Sept	2007 Oct	2007 Sept
Manufacturing	\$21.97	\$22.08	43.3	43.4
Durables	23.64	23.77	45.2	45.2
Transport Equipment	28.46	28.37	44.6	44.4
Nondurables	15.53	15.49	37.3	37.5

## University of Michigan Inflation and Income Outlook Forecast Update, 2006–2009

Periodically, the University of Michigan's forecasting group (Research Seminar in Quantitative Economics – RSQE) prepares projections for the development of the state's economy. In November 2007 a new forecast was published projecting Michigan's inflation and income growth for 2008 and 2009.

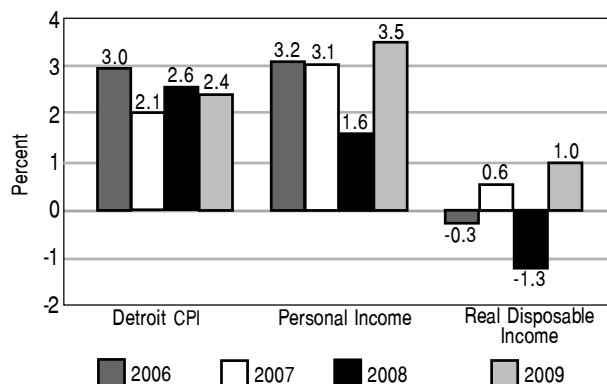
The report suggests that consumer price inflation, as measured by the Detroit Consumer Price Index (CPI), will decline from the 3.0 percent increase recorded for 2006 to 2.1 percent in 2007, and then will move up to 2.6 percent in 2008. However, with food inflation moderating and oil prices dipping, consumer inflation will regress to 2.4 percent in 2009.

Personal income growth is also expected to fluctuate between 2007 and 2009. It will remain above three percent in 2007, before moving down to 1.6 percent in 2008. A larger annual drop in employment and slower gains in average earnings per worker will contribute to the slowdown. Personal income growth will rebound to 3.5 percent in 2009, as job losses moderate, average earnings advance, and income from property (dividends, interest, and rent) pick up.

Real disposable income is projected to advance by 0.6 percent during 2007, a modest improvement from the 0.3 percent decline in 2006. With income growth moderating, faster inflation, and a higher state income tax rate, real disposable income will drop by 1.3 percent in 2008. However, with state tax rates stabilizing, inflation holding steady, and personal income improving, the state's real disposable income will reverse its course and move up by one percent in 2009.

Source: Research Seminar in Quantitative Economics (RSQE), University of Michigan, November 2007.

**Michigan Inflation and Income Growth  
2006–2009**



## Michigan

(Data In Thousands)

Oct 2007    Sep 2007    Oct 2006

### Place of Residence

Labor Force	5,012	5,041	5,090
Employment	4,662	4,686	4,775
Unemployment	351	355	315
Rate (Percent)	7.0	7.0	6.2

### Industry Jobs (Place of Work)

Total Nonfarm	4,306	4,305	4,382
Goods-Producing	794	805	836
Nat Resources & Mining	8	8	8
Construction	172	175	188
Manufacturing	614	623	639
Durable Goods	471	479	492
Fabricated Metals	83	83	85
Machinery Manufact.	72	73	73
Transportation Equip.	190	197	210
Nondurable Goods	143	144	147
Service-Providing	3,513	3,500	3,546
Trade, Transport & Util.	784	781	797
Wholesale Trade	170	170	171
Retail Trade	487	484	497
Motor Vehicle Dealers	56	56	58
Food & Beverage Stores	80	81	83
General Merchandise	108	107	112
Transp, Warehousing & Util	127	127	129
Information	65	66	66
Financial Activities	211	212	215
Finance & Insurance	159	159	161
Real Estate & Rental	52	53	54
Prof & Business Services	594	596	598
Prof, Scientific & Technical	246	244	247
Management Scientific Services	20	20	20
Administrative Support	287	290	290
Education & Health Services	600	594	591
Education Services	82	77	81
Health Care & Social Asst	518	517	511
Leisure & Hospitality	410	424	409
Arts, Entertainment & Rec	62	69	63
Accommodation & Food	347	355	346
Other Services	175	176	178
Government	674	652	692
Federal	53	53	54
State	182	176	180
Local	439	422	459

## Civilian Labor Force and Wage & Salary Estimates

	Ann Arbor			Battle Creek			Bay City		
	Oct 2007	Sep 2007	Oct 2006	Oct 2007	Sep 2007	Oct 2006	Oct 2007	Sep 2007	Oct 2006
<b>Place of Residence</b>									
Labor Force	188,700	188,200	192,300	69,900	70,500	71,700	53,100	53,500	55,300
Employment	179,600	178,600	184,400	65,300	65,700	67,400	49,700	49,900	52,200
Unemployment Rate (Percent)	9,100 4.8	9,600 5.1	7,900 4.1	4,600 6.6	4,800 6.8	4,300 6.0	3,400 6.3	3,600 6.7	3,000 5.5
<b>Place of Work</b>									
Total Nonfarm Jobs	204,400	202,300	205,800	60,700	60,800	61,500	37,600	37,500	38,800
Nat Resources & Construction	5,700	5,800	6,100	2,300	2,300	2,400	1,500	1,500	1,500
Manufacturing	17,800	17,900	20,100	13,400	13,400	13,600	4,000	3,900	4,200
Trade, Transport & Utilities	27,600	27,600	27,700	9,800	9,900	10,000	8,200	8,300	8,600
Wholesale Trade	5,800	5,800	5,800	*	*	*	*	*	*
Retail Trade	17,800	17,800	18,100	6,800	6,900	6,800	5,900	5,900	6,100
Information	3,600	3,600	3,700	*	*	*	700	700	700
Financial Activities	6,100	6,100	6,000	1,600	1,600	1,600	1,600	1,600	1,600
Professional & Business Services	27,400	27,700	27,500	5,000	5,100	5,100	3,500	3,500	3,600
Educational & Health Services	24,200	24,000	23,800	10,100	10,000	9,700	5,800	5,700	5,700
Leisure & Hospitality	14,400	14,700	14,400	5,500	5,700	5,600	4,500	4,500	4,600
Other Services	6,500	6,500	6,500	2,400	2,400	2,400	2,100	2,100	2,100
Government	71,100	68,400	70,000	10,000	9,800	10,400	5,700	5,700	6,200
<b>Detroit-Warren-Livonia</b> <b>Flint</b> <b>Grand Rapids-Wyoming</b>									
(Data in Thousands)									
	Oct 2007	Sep 2007	Oct 2006	Oct 2007	Sep 2007	Oct 2006	Oct 2007	Sep 2007	Oct 2006
<b>Place of Residence</b>									
Labor Force	2,148	2,157	2,186	203,300	205,600	210,100	406,400	409,600	410,000
Employment	1,981	1,991	2,031	186,800	188,600	195,500	382,700	384,900	389,100
Unemployment Rate (Percent)	167 7.8	167 7.7	155 7.1	16,500 8.1	17,000 8.3	14,600 7.0	23,600 5.8	24,700 6.0	20,900 5.1
<b>Place of Work</b>									
Total Nonfarm Jobs	1,974	1,968	2,012	149,000	149,200	153,800	397,600	397,600	396,200
Nat Resources & Construction	72	73	80	6,300	6,500	6,500	18,500	18,800	18,700
Manufacturing	255	261	263	16,200	16,500	18,400	72,800	72,800	73,800
Trade, Transport & Utilities	364	360	371	31,500	31,500	32,000	74,900	74,400	74,400
Wholesale Trade	89	89	91	6,400	6,400	6,500	22,300	22,200	22,300
Retail Trade	212	209	216	20,900	20,900	21,400	42,100	41,800	41,600
Information	33	33	33	2,600	2,600	2,600	5,700	5,700	5,500
Financial Activities	112	111	114	7,000	7,000	7,200	22,700	22,800	22,400
Professional & Business Services	360	360	365	13,600	13,900	14,200	57,200	58,200	56,700
Educational & Health Services	282	278	277	24,400	24,500	24,200	58,500	58,100	57,000
Leisure & Hospitality	182	185	184	16,000	16,300	16,200	33,300	33,800	33,200
Other Services	91	91	91	6,200	6,200	6,300	16,300	16,300	16,400
Government	225	216	235	25,200	24,200	26,200	37,700	36,700	38,200

\* Data Not Available

## Civilian Labor Force and Wage & Salary Estimates

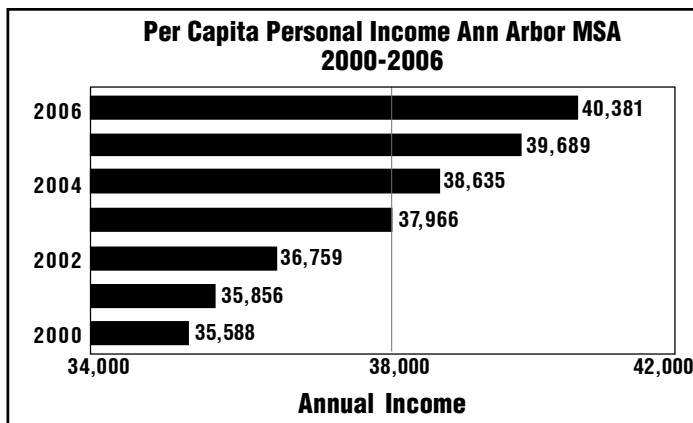
	Holland-Grand Haven			Jackson			Kalamazoo-Portage		
	Oct 2007	Sep 2007	Oct 2006	Oct 2007	Sep 2007	Oct 2006	Oct 2007	Sep 2007	Oct 2006
<b>Place of Residence</b>									
Labor Force	137,100	138,200	138,500	76,500	77,100	78,200	175,000	175,900	175,800
Employment	129,600	130,500	132,300	70,900	71,200	73,300	165,700	166,000	167,800
Unemployment Rate (Percent)	7,600 5.5	7,800 5.6	6,200 4.5	5,600 7.3	5,900 7.7	4,900 6.3	9,300 5.3	9,900 5.6	8,000 4.6
<b>Place of Work</b>									
Total Nonfarm Jobs	117,800	117,800	118,300	58,900	58,900	60,000	148,900	148,700	147,700
Nat Resources & Construction	6,200	6,300	6,300	2,200	2,200	2,400	6,200	6,300	6,500
Manufacturing	36,600	36,800	36,800	9,000	9,100	9,500	22,500	22,700	23,100
Trade, Transport & Utilities	18,000	18,000	18,100	12,400	12,400	12,600	24,600	24,500	24,500
Wholesale Trade	*	*	*	*	*	*	4,700	4,700	4,500
Retail Trade	10,100	10,200	10,400	7,600	7,600	7,800	15,900	15,900	16,000
Information	700	700	700	500	500	500	1,500	1,500	1,500
Financial Activities	3,300	3,300	3,200	1,900	1,900	1,900	7,800	7,800	7,800
Professional & Business Services	12,100	12,200	12,200	4,300	4,400	4,400	17,000	16,900	16,300
Educational & Health Services	10,800	10,700	10,900	9,900	9,800	9,800	22,400	22,400	21,500
Leisure & Hospitality	8,400	8,600	8,300	5,700	5,800	5,600	15,800	16,100	15,500
Other Services	4,800	4,800	4,900	2,900	2,900	2,900	6,500	6,500	6,500
Government	16,900	16,400	16,900	10,100	9,900	10,400	24,600	24,000	24,500
<b>Place of Residence</b>									
Labor Force	250,000	249,700	253,100	78,700	76,800	78,300	89,500	90,900	89,600
Employment	236,400	235,200	241,000	72,200	72,000	73,500	83,000	84,300	84,100
Unemployment Rate (Percent)	13,600 5.4	14,500 5.8	12,200 4.8	6,500 8.2	4,800 6.3	4,800 6.1	6,500 7.2	6,600 7.3	5,400 6.1
<b>Place of Work</b>									
Total Nonfarm Jobs	231,800	230,000	232,000	44,000	43,600	43,600	66,100	67,000	65,800
Nat Resources & Construction	8,500	8,700	8,900	3,400	3,300	2,900	2,300	2,300	2,300
Manufacturing	20,400	20,600	21,900	7,000	6,900	7,100	12,800	12,900	12,900
Trade, Transport & Utilities	36,600	36,500	36,500	9,300	9,400	9,300	14,200	14,200	14,300
Wholesale Trade	5,600	5,600	5,600	1,000	1,000	1,000	*	*	*
Retail Trade	24,300	24,300	24,400	5,300	5,400	5,300	11,300	11,400	11,600
Information	3,000	3,000	2,900	*	*	*	1,000	1,000	1,000
Financial Activities	15,500	15,500	15,400	1,700	1,700	1,700	1,900	1,900	2,000
Professional & Business Services	20,300	20,200	20,500	3,700	3,700	3,700	4,000	4,000	3,900
Educational & Health Services	29,000	28,900	28,400	4,900	4,800	4,900	11,400	11,300	10,800
Leisure & Hospitality	19,500	20,100	19,700	5,400	5,500	5,100	7,000	8,200	6,900
Other Services	11,100	11,000	11,000	1,900	1,900	2,000	2,400	2,400	2,500
Government	67,900	65,500	66,800	6,300	6,000	6,600	9,100	8,800	9,200

\* Data Not Available

## Civilian Labor Force and Wage & Salary Estimates

	Niles-Benton Harbor			Saginaw-Sag. Township North		
	Oct 2007	Sep 2007	Oct 2006	Oct 2007	Sep 2007	Oct 2006
<b>Place of Residence</b>						
Labor Force	80,300	80,500	79,500	95,300	95,900	98,600
Employment	75,200	75,300	74,900	88,800	89,000	92,700
Unemployment	5,100	5,200	4,600	6,500	6,900	5,900
Rate (Percent)	6.3	6.4	5.8	6.8	7.1	5.9
<b>Place of Work</b>						
Total Nonfarm Jobs	66,600	66,700	65,000	90,300	90,100	92,800
Nat Resources & Construction	2,600	2,600	2,500	3,800	3,800	4,000
Manufacturing	14,300	14,400	14,600	11,900	12,200	13,000
Trade, Transport & Utilities	11,600	11,600	11,800	17,400	17,300	17,600
Wholesale Trade	*	*	*	2,500	2,600	2,500
Retail Trade	7,400	7,400	7,300	12,200	12,000	12,400
Information	900	900	900	1,700	1,700	1,800
Financial Activities	2,200	2,200	2,200	4,200	4,200	4,300
Professional & Business Services	5,200	5,200	5,200	10,500	10,400	10,200
Educational & Health Services	10,200	10,100	10,100	15,500	15,400	15,600
Leisure & Hospitality	6,400	6,700	6,400	9,100	9,400	9,400
Other Services	3,000	3,000	3,100	3,800	3,800	3,900
Government	10,200	10,000	8,200	12,400	11,900	13,000

	Upper Peninsula			Northeast Lower Michigan			Northwest Lower Michigan		
	Oct 2007	Sep 2007	Oct 2006	Oct 2007	Sep 2007	Oct 2006	Oct 2007	Sep 2007	Oct 2006
<b>Place of Residence</b>									
Labor Force	160,800	163,000	163,000	99,200	101,500	100,400	159,100	162,100	160,300
Employment	151,000	152,700	154,700	91,600	93,700	93,800	148,600	151,600	151,500
Unemployment	9,800	10,300	8,300	7,600	7,800	6,600	10,400	10,500	8,800
Rate (Percent)	6.1	6.3	5.1	7.7	7.7	6.6	6.6	6.5	5.5



### Regional Focus

#### Per-Capita Personal Income Ann Arbor MSA 2000-2006

During 2006 (preliminary data) per-capita annual personal income in the Ann Arbor Metropolitan Statistical Area (MSA) stood at \$40,381, an increase of \$4,793 or 13.5 percent from the level recorded in the area during 2000. In comparison, average per-capita income in Michigan during 2006 stood at \$33,847, an increase of \$4,296 or 14.5 percent over 2000. The nation's total per-capita income reached \$36,276 in 2006, an increase of \$6,433 or 21.6 percent from the average recorded in 2000.

## October Unemployment Rates Moved Down Slightly in Most of Michigan's Major Labor Market Areas

Seasonally unadjusted jobless rates edged downward in 13 of Michigan's 17 regional major labor market areas during October. The rate reductions in the 13 areas were minor, with a median drop of 0.2 of a percentage point. Three areas experienced jobless rate increases over the month, with the largest gain recorded in the Monroe Metropolitan Statistical Area (MSA). This was due to short term layoffs in the automotive industry in several regional factories. In the other two areas, the Detroit-Warren-Livonia MSA and the Northwest Lower Michigan Region the rate increases were minor, moving up in both by one tenth of a percentage point. The unemployment rate in the Northeast Lower Michigan Region remained unchanged over the month. From September to October, total employment levels contracted in 14 regions. Most of the employment declines were moderate, with the exception of a few areas, including the Northeast and Northwest Lower Michigan Regions, following the end of the summer tourism season.

From October 2006 to October 2007, jobless rates moved up in all 17 of the state's major labor market areas. Rate increases over the year ranged from one half of a percentage point to 2.1 percentage points, with the majority of the regions reporting rate hikes of around one percent. During this period, labor force fell in 15 regions and increased slightly in two, while employment dropped in 16 regions, with significant decreases reported in a number of the areas. Over-the-year, total employment moved up slightly in the Niles-Benton Harbor MSA.

Among Michigan's major labor markets, the Ann Arbor area had the lowest unemployment rate at 4.8 percent, followed by the Kalamazoo-Portage MSA with 5.3 percent and the Lansing-East Lansing MSA with 5.4. The highest jobless rate in the month of October was recorded by the Monroe MSA at 8.2 percent, followed closely by the Flint MSA with 8.1 percent.

## Nonfarm Employment Mixed in Michigan's Metropolitan Areas

Total nonfarm jobs moved up in seven of Michigan's 14 MSAs during the month of October, while four areas reported decreases, and three areas, the Grand Rapids, Holland, and Jackson MSAs remained unchanged for the month. Among the MSAs reporting job gains in October, Ann Arbor had the largest percentage increase at 1.0 percent, followed by the Monroe and Lansing MSAs, up by 0.9 and 0.8 percentage points, respectively. Employment advances were seasonal, and were concentrated in the service-providing industries.

Job gains in the service-providing industries were most evident in state and local government, as educational facilities in all but one area (Bay City remained unchanged) continued recalling their staff and support personnel for the fall semester. Many areas also recorded seasonal advances in private education and health services. Among the areas reporting strong increases in government employment were the Detroit MSA, up by 9,600 jobs or 4.4 percent, the Ann Arbor MSA, up by 2,700 or 3.9 percent, and the Lansing MSA up by 2,400 or 3.7 percent. Most other major sectors (retail trade, information, financial activities, professional and business services, and other services) remained basically flat, reporting only small changes during the month. The sector showing seasonal job reductions throughout the state was leisure and hospitality services, mostly in accommodation and food

services and arts, entertainment and recreation, as the tourism and recreation season came to its end.

In the goods-producing sector, employment fell in most areas mainly due to production adjustments in the durable goods sector, particularly the automotive industry and its suppliers. The largest percentage reductions were recorded in the Detroit and Flint MSAs, both down by 2.2 percent, followed by the Saginaw-Saginaw Township North MSA, down by 1.9 percent. The construction industry experienced only minor seasonal changes in October.

During October, average weekly hours in manufacturing increased in three of the five major areas for which data is currently available. One area reported a decline, and one area (Detroit-Warren-Livonia MSA) remained unchanged. Average hourly earnings contracted in three areas during the month, with declines reported mainly in the durable goods industries. The total effect of these changes was that average weekly earnings dipped in three of the major areas. Small weekly earnings reductions were reported in the Lansing MSA, down by \$4.88, followed by the Detroit and Kalamazoo-Portage MSAs, down by \$4.00 and \$3.75, respectively. The areas to show gains for the month were the Flint MSA up by \$59.69, and the Grand Rapids-Wyoming MSA up by \$2.66.

## Manufacturing Hours and Earnings\* Michigan & Selected Metropolitan Areas October and September 2007

Area	Average Weekly Hours		Average Hourly Earnings		Average Weekly Earnings	
	Oct	Sept	Oct	Sept	Oct	Sept
<b>Michigan</b>	<b>43.3</b>	<b>43.4</b>	<b>21.97</b>	<b>22.08</b>	<b>\$951.30</b>	<b>\$958.27</b>
Detroit-Warren-Livonia	44.5	44.5	24.75	24.84	1,101.38	1,105.38
Flint	46.4	45.6	32.43	31.69	1,504.75	1,445.06
Grand Rapids-Wyoming	42.7	42.6	18.10	18.08	772.87	770.21
Kalamazoo-Portage	39.3	39.5	14.78	14.80	580.85	584.60
Lansing-East Lansing	40.8	40.7	24.50	24.68	999.60	1,004.48

\* Hours and earnings data for the manufacturing sector is currently available only in the above MSAs.

### Consumer Price Index (CPI) Detroit Metropolitan Area October 2007

The Consumer Price Index (CPI) is a measure of the average change in prices over time in a fixed market basket of goods and services. The Bureau of Labor Statistics (BLS) publishes the CPI for two population groups: 1) a CPI for All Urban Consumers (CPI-U) which covers approximately 87 percent of the total population, and 2) a CPI for Urban Wage Earners and Clerical Workers (CPI-W) which covers 32 percent of the total population. The CPI-U includes, in addition to wage earners and clerical workers, groups such as professional, managerial and technical workers, the unemployed, retirees and others not in the labor force.

The CPI is based on prices of food, clothing, shelter and fuels, transportation fares, charges for doctors' and dentists' services, drugs, and other goods and services that people buy for day-to-day living. Prices are collected in 87 urban areas across the country, including the Detroit-Ann Arbor-Flint Consolidated Metropolitan Statistical Area (CMSA). The Detroit CPI is published every other month.

Consumer prices (CPI-U) in the Detroit CMSA, moved up from an average of 199.7 index points in August 2007 to an average of 201.8 points in October 2007. The 1.1 percent increase was primarily due to higher costs for apparel (4.0 percent), education and communication (2.8 percent), and recreation (2.8 percent). Other major items showing gains for the period were food and beverages, transportation, and medical care. Prices for fuels and utilities fell by 1.4 percent, while prices for energy in general and motor fuel, declined by 1.1 and 0.4 percent, respectively.

### Consumer Price Index (CPI) All Urban Consumers (CPI-U) Detroit Metropolitan Area October 2007

	Index Number for October 2007	Percent Change from Aug. 2007 to Oct. 2007
<b>Detroit Metro All Items</b>	<b>201.8</b>	<b>+1.1</b>
Food And Beverages	190.4	+1.2
Food At Home	186.7	+2.0
Food Away From Home	195.2	+0.3
Housing	190.9	+0.3
Shelter	216.5	+0.7
Fuels & Utilities	210.2	-1.4
Apparel	105.0	+4.0
Transportation	207.7	+1.1
Motor Fuel	252.3	-0.4
Medical Care	354.3	+0.5
Education & Communicat.	130.5	+2.8
Energy	212.7	-1.1
Recreation	120.9	+2.8

## Michigan's Labor Surplus Areas, Fiscal Year 2008

Alcona County	Emmet County	Lansing City	Otsego County
Alger County	Flint City	Lapeer County	Pontiac City
Allegan County	Flint Twp	Lenawee County	Port Huron City
Alpena County	Genesee County	Lincoln Park City	Presque Isle County
Antrim County	Gladwin County	Luce County	Roscommon County
Arenac County	Gogebic County	Mackinac County	Roseville City
Baraga County	Grand Rapids City	Macomb County	Saginaw City
Battle Creek City	Gratiot County	Manistee County	Bal of Saginaw County
Bay City	Highland Park City	Mason County	Sanilac County
Bal of Bay County	Hillsdale County	Mecosta County	Schoolcraft County
Benzie County	Holland City	Missaukee County	Shiawassee County
Berrien County	Houghton County	Monroe County	Southfield City
Branch County	Huron County	Montcalm County	St. Clair Shores City
Calhoun County	Ingham County	Montmorency County	Bal of St. Clair County
Charlevoix County	Inkster City	Mount Morris Twp	St. Joseph County
Cheboygan County	Ionia County	Muskegon City	Taylor City
Chippewa County	Iosco County	Muskegon County	Tuscola County
Clare County	Iron County	Newaygo County	Van Buren County
Clinton Twp	Jackson City	Oak Park City	Warren City
Crawford County	Jackson County	Oceana County	Waterford Township
Delta County	Kalamazoo City	Ogemaw County	Wayne County
Detroit City	Kalkaska County	Ontonagon County	Wexford County
East Lansing City	Keweenaw County	Osceola County	Wyoming City
Eastpointe City	Lake County	Oscoda County	

### NOTICE FOR FISCAL YEAR 2008

The U.S. Department of Labor has issued the Labor Surplus Area listings for Fiscal Year (FY) 2008. The new FY 2008 list for Michigan is printed above and **is in effect from October 1, 2007 until September 30, 2008**, or until a new list for FY 2008 is published.

**The qualifying rate for a labor surplus area classification for FY 2008 was calculated at 6.0 percent for the base years including January 2005 through December 2006.** (The calculation of the qualifying rate is done by multiplying the nation's average unemployment rate of those two years by a factor of 1.2).

**Visit our website at [www.michigan.gov/lmi](http://www.michigan.gov/lmi)**



FIRST CLASS MAIL  
POSTAGE & FEES PAID  
U.S. DEPARTMENT OF LABOR  
PERMIT NO. 167

Michigan Department of Labor & Economic Growth  
Bureau of Labor Market Information & Strategic Initiatives  
Cadillac Place  
3032 W. Grand Boulevard, Suite 9-100  
Detroit, Michigan 48202

**Official Business**  
**Penalty For Private Use \$300**

#### ADDRESS CHANGE:

Remove From Mailing List  Change As Shown   
Please send this form and attached label to DLEG; Labor Market Analysis Section  
Bureau of Labor Market Information & Strategic Initiatives;  
Cadillac Place, 3032 W. Grand Boulevard, Suite 9-100; Detroit, Michigan 48202.  
For more information, please contact: Labor Market Analysis Section, (313) 456-3090